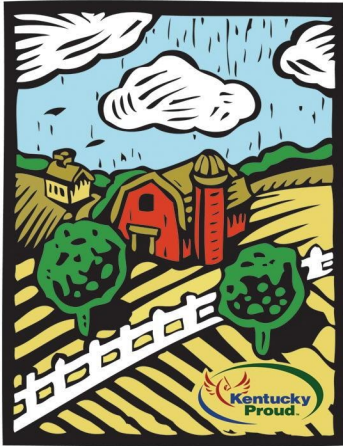


For Immediate Release

Contact: Penny Peavler, [stmatthewsfarmersmarket@gmail.com](mailto:stmatthewsfarmersmarket@gmail.com) or 502-263-9631 (media inquiries only)

St. Matthews



Farmers Market  
At Beargrass Christian Church

**St. Matthews Farmers Market Kicks Off 2021 Season May 8, 2021 - 15th Season**

St. Matthews Farmers Market, Kentucky's largest urban market, opens for its 15<sup>th</sup> season Saturday, May 8, 2021. The Market runs Saturdays, 8 a.m. to 12 noon through September 25, 2021, and is located at Beargrass Christian Church, 4100 Shelbyville Road, Louisville, KY 40207. Featuring more than 40 farms and vendors selling local meats, vegetables, grains, fruit, hot breakfast, and flowers, the market requires shoppers to social distance. Consistent with Governor Andy Beshear's April 26 change to guidelines regarding masks at outdoor events with fewer than 1,000 participants, masks are not required but are encouraged. The Market will continue to follow CDC recommendations and government requirements to address the COVID-19 epidemic. Volunteer parking attendants assure complimentary onsite parking for patrons.

David Garey, of Garey Farms, in Paris, Kentucky, and a founding farm of the market, said, "The friendships I have made with marketgoers and volunteers, are such a part of why I love this market."

Bob Callander, Market Committee Member, and co-founder, offered, "As Wendall Berry said, 'Eating is an agricultural act.' and our goal is to offer high quality food and products from local producers, and bring farm-fresh food to the community while supporting small farmers who care for the land."

Learn more at [www.smfarmersmarket.com](http://www.smfarmersmarket.com) or [facebook.com/smfarmersmarket](https://facebook.com/smfarmersmarket). Please visit these sites for the most up to date information on COVID-19 policies and procedures as these may change throughout the season.

###